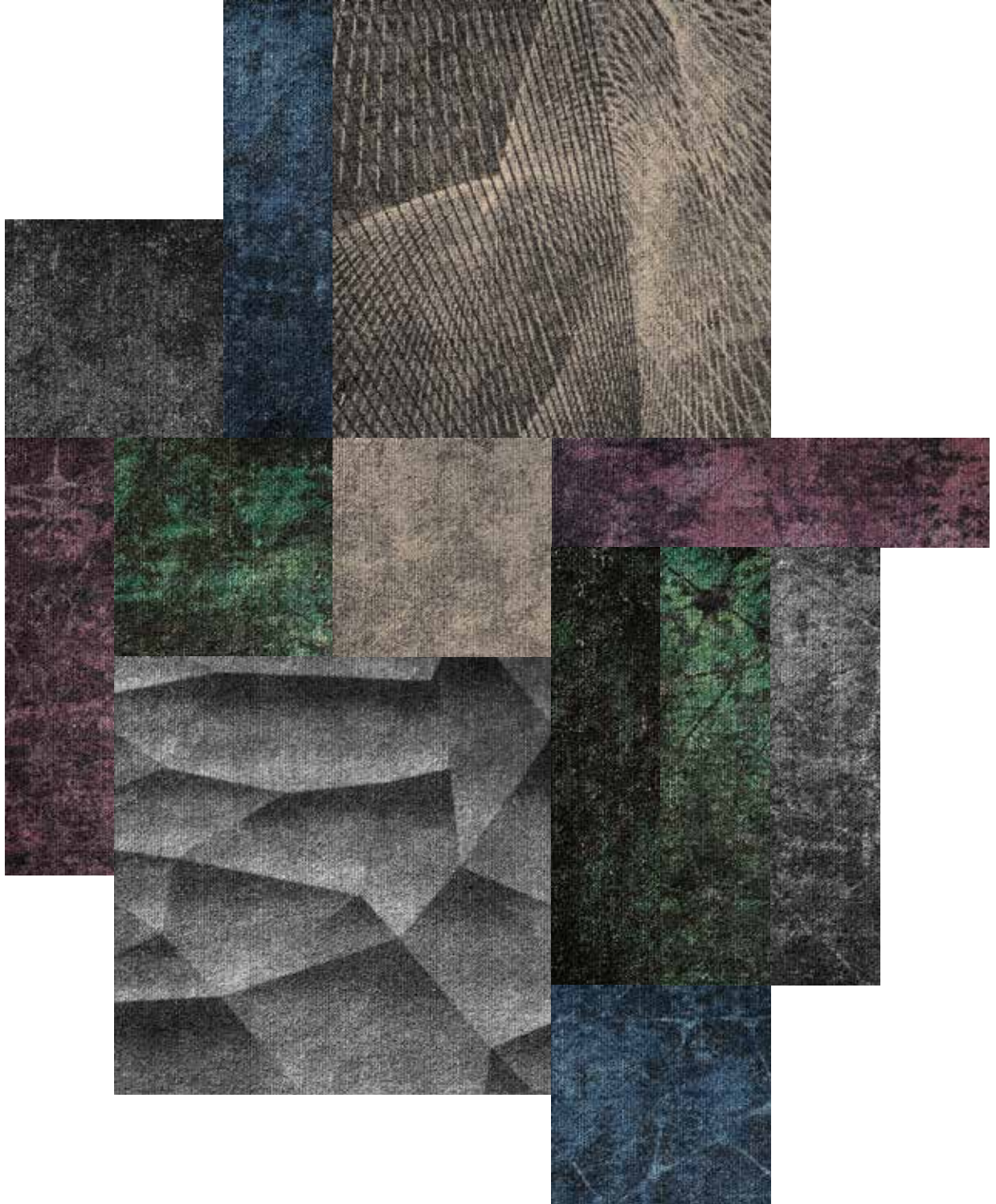


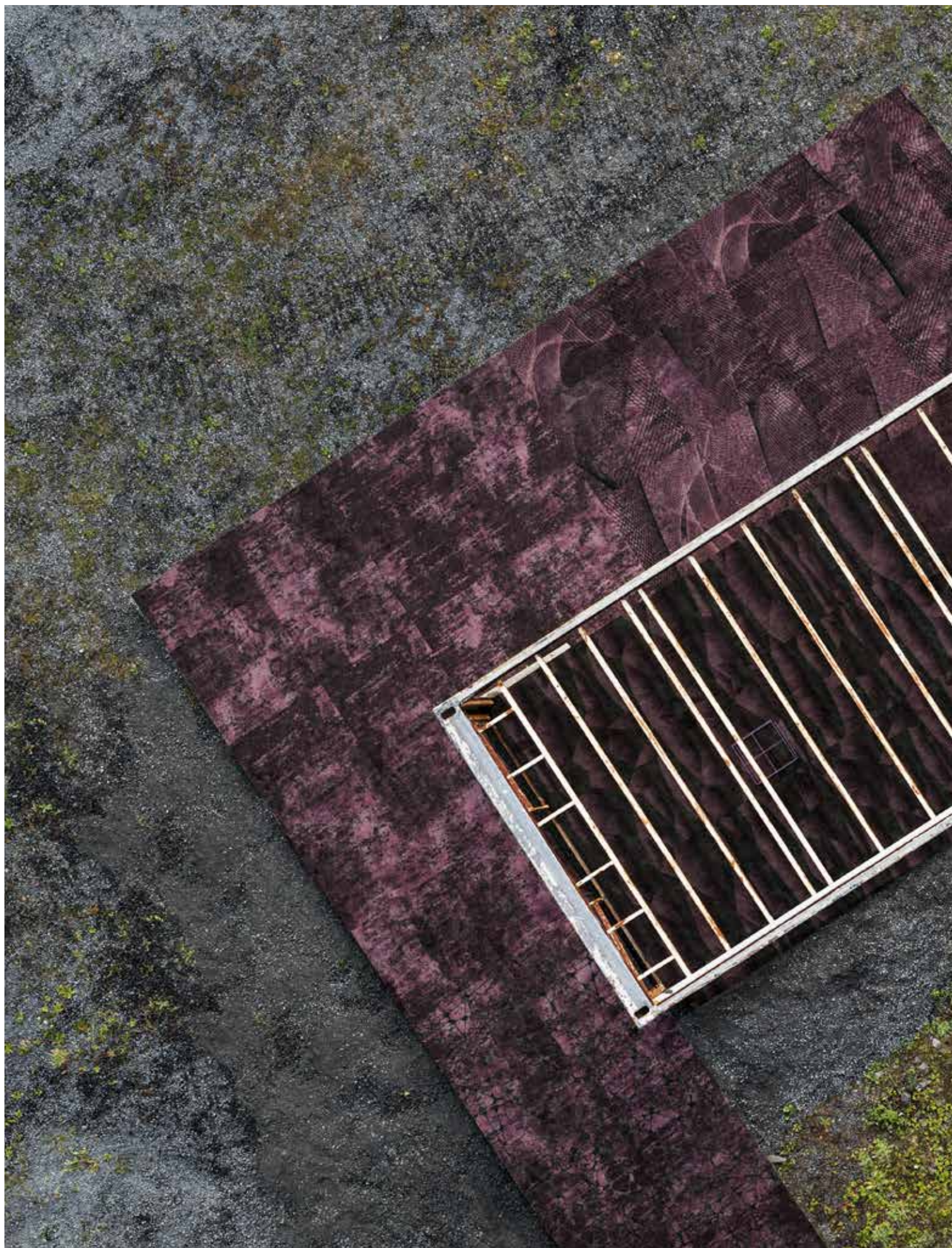
Discovery



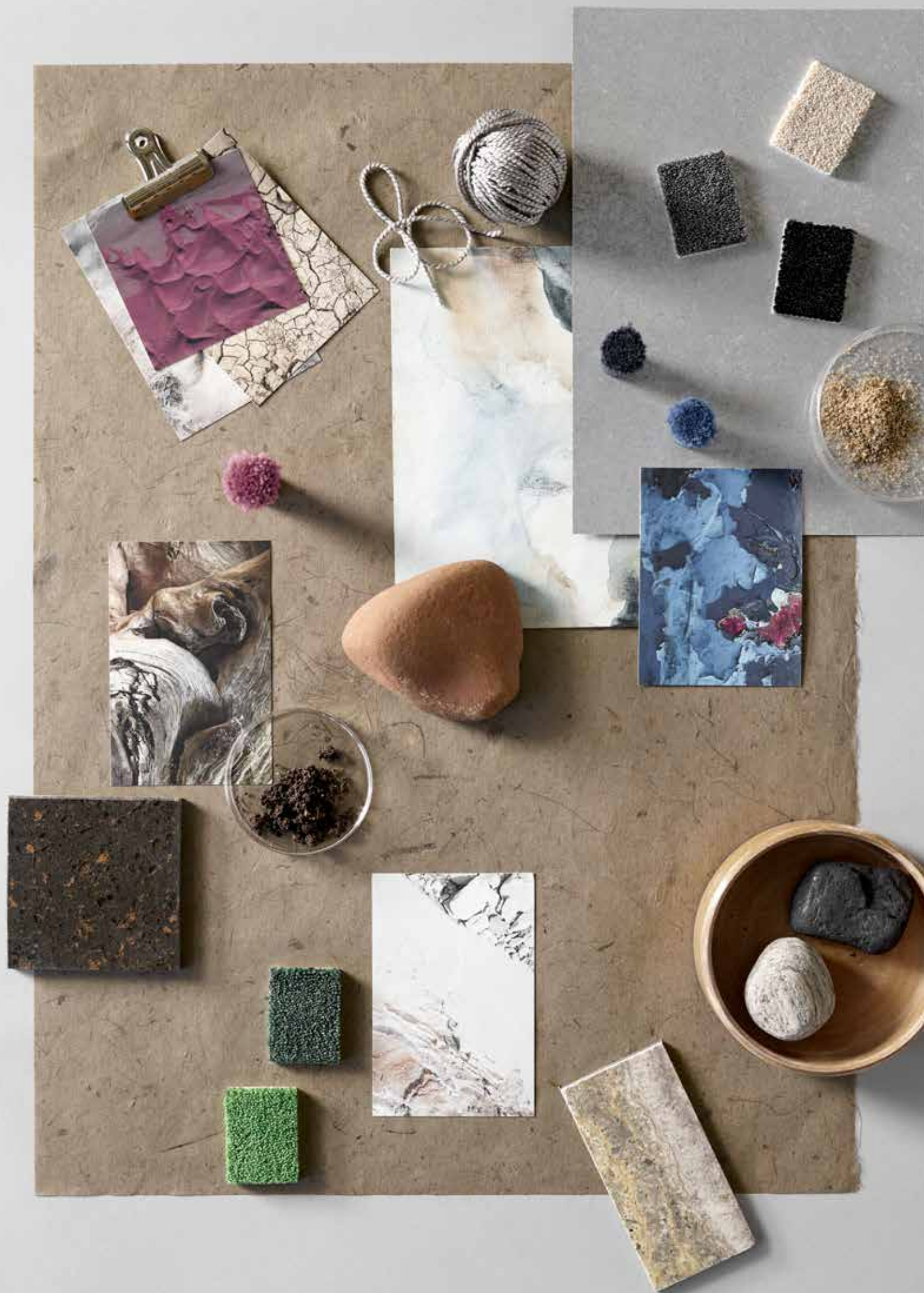
ReForm by

ege[®]

7	Intro
8	Sizes and shapes
11	Designs and colours
12	Ash black
14	Sand grey
16	Broken green
20	Ocean blue
24	Wild berry
26	Carpet for any specification
27	The Green Thread
29	Terms and conditions









The designer

Edeltraud Angela Meiners. Born in 1964. Holds a degree in Design Informatics and Textile Design from the University of Applied Sciences and Arts, Hanover. Experienced Designer and Creative Director.

The collection

When seen from above, the Earth is a perfect system. Looking down, each miracle of nature has a unique power of its own, whether it's the massive pressure of the roaring ocean or the stubbornness of the unmovable cliff always holding on to its majestic position. Individually, these forces appear incompatible, but from a bird's eye view it becomes obvious that they're inter-related and highly adaptable. Through the algorithm of the marks we leave behind, Discovery explores the relatedness of humans too. Complex road maps, rigorous agricultural structures and neat yet somewhat chaotic city grids are examples of man-made systems so large in scale they can only be comprehended from a distance. Natural wonders or human-crafted constructions, they're all part of the same discoverable networked systems.

In this collection, the multi-level loop construction creates texture that's influenced by these networked systems and defines

the five patterns: Planet, Earth, Network, Net and Cliffs. Available in sizes and shapes optimised according to the individual pattern, they can be used alone or combined to give a soft or dramatic expression to the floorscape. Discovery is available as carpet tiles, planks and wall-to-wall carpet.

Natural phenomena inspired the colour palette of neutrals complemented by darker or almost supernatural bright shades that create either a subtle or powerful yet refined look. Each design comes in five contemporary colour groups carefully chosen for their ability to combine into unique compositions.

Cradle to Cradle Certified™, crafted from regenerated and regenerable yarn and fitted with our patented recycled Ecotrust backing, the collection perfectly suits your sustainable flooring project. Follow The Green Thread on page 27 to learn more.

Sizes and shapes

Discovery is available as carpet tiles, planks and wall-to-wall carpet offering a multitude of design options for your floorscape. With this collection, you can create distinctive and functional spaces that offer flexibility and variability in their expression. To help you make the most of your floor, you can choose from a variety of carpet sizes that match your preferences and requirements.

Carpet tiles and planks offer a high level of flexibility, easy to install with flawless joints. To make the most of the five unique patterns, Planet, Earth and Network are available in 48x48 cm tiles, 96x96 cm tiles, 24x96 cm planks and wall-to-wall carpet; Net and Cliffs are available in 96x96 cm tiles and wall-to-wall carpet only. The carpet tiles can be installed monolithic style or as quarterturn, where pattern and pile direction create a different expression. This collection is a great visual toolbox where you can achieve very different looks depending on the sizes and shapes you choose.

Discovery comes in five contemporary colour groups from subtle tone-on-tone shades to more rich tones, carefully coordinated for perfect combinations. It allows you to experiment with different spatial options that help define areas such as meeting points and quiet or communal zones, as well as catering to social distancing requirements and wayfinding. All patterns can be unfolded onto a continuous and unbroken surface when using wall-to-wall carpet, available at a width of 4 metres.



The page features a minimalist abstract design. A large, light beige rectangle occupies the left side. A white rectangle with a thin grey border overlaps the top right of the beige rectangle. To the right of the white rectangle is a solid dark green vertical bar. In the bottom center, a series of four concentric circles are drawn with thin grey lines, partially overlapping the beige rectangle and the white rectangle. The text 'Rooms without boundaries' is positioned on the left side, within the beige area.

Rooms without boundaries

Create an evocative zone for coworking, focused work or relaxation by combining two or more tone-on-tone designs from your favourite colour group. Or go bold when mixing one or more designs in several colours to define your very own Discovery system, perfectly suited to any work situation.

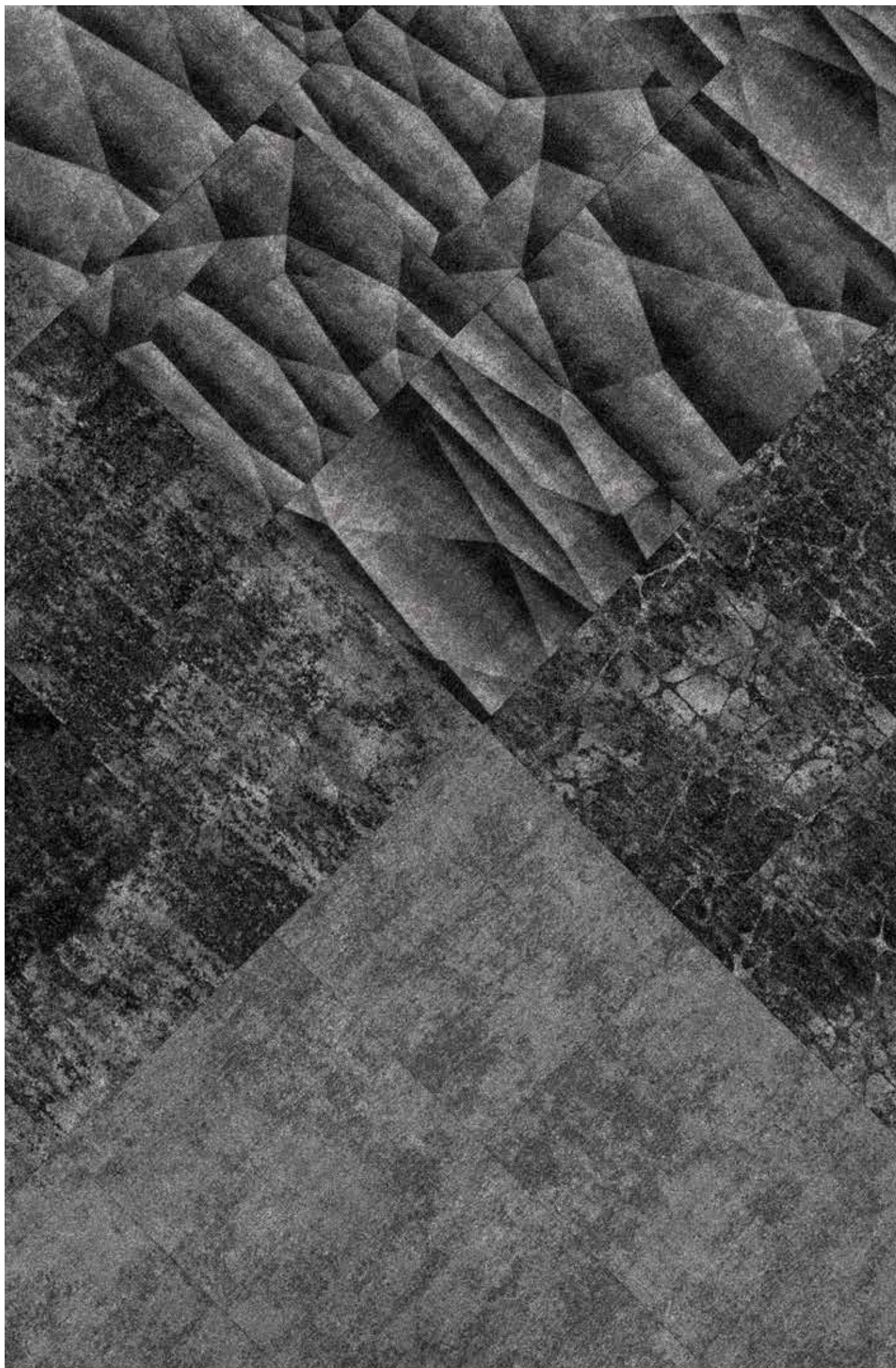


Five designs and five colour groups

In line with the systematic collection story, Discovery comes in five designs and five colour groups. Discover your options.



PLANET EARTH NETWORK NET CLIFFS

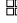





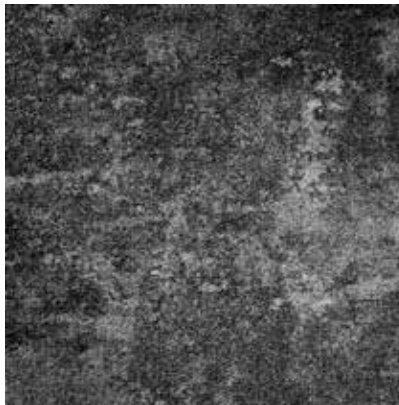



Ash black

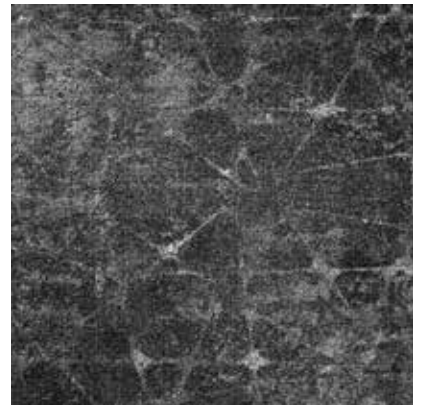
Black and grey tones with various colour saturations and coordinated contrasts add a dramatic yet understated ambience to your floor. A classic interior colour, ash black can be a bold choice.




713501048  / 713501096 
713501024  / 7135010 







713510048  / 713510096 
713510024  / 7135100 





713520048  / 713520096 
713520024  / 7135200 





713502048  / 713502096 
713502024  / 7135020 



713530096 
7135300 



713540096 
7135400 













Sand grey

Comprising the lightest Discovery colour group, sand grey combines beige and grey colour schemes into contemporary looks with a high degree of colour contrast.







713504048  / 713504096 
713504024  / 7135040 







713511048  / 713511096 
713511024  / 7135110 





713521048  / 713521096 
713521024  / 7135210 





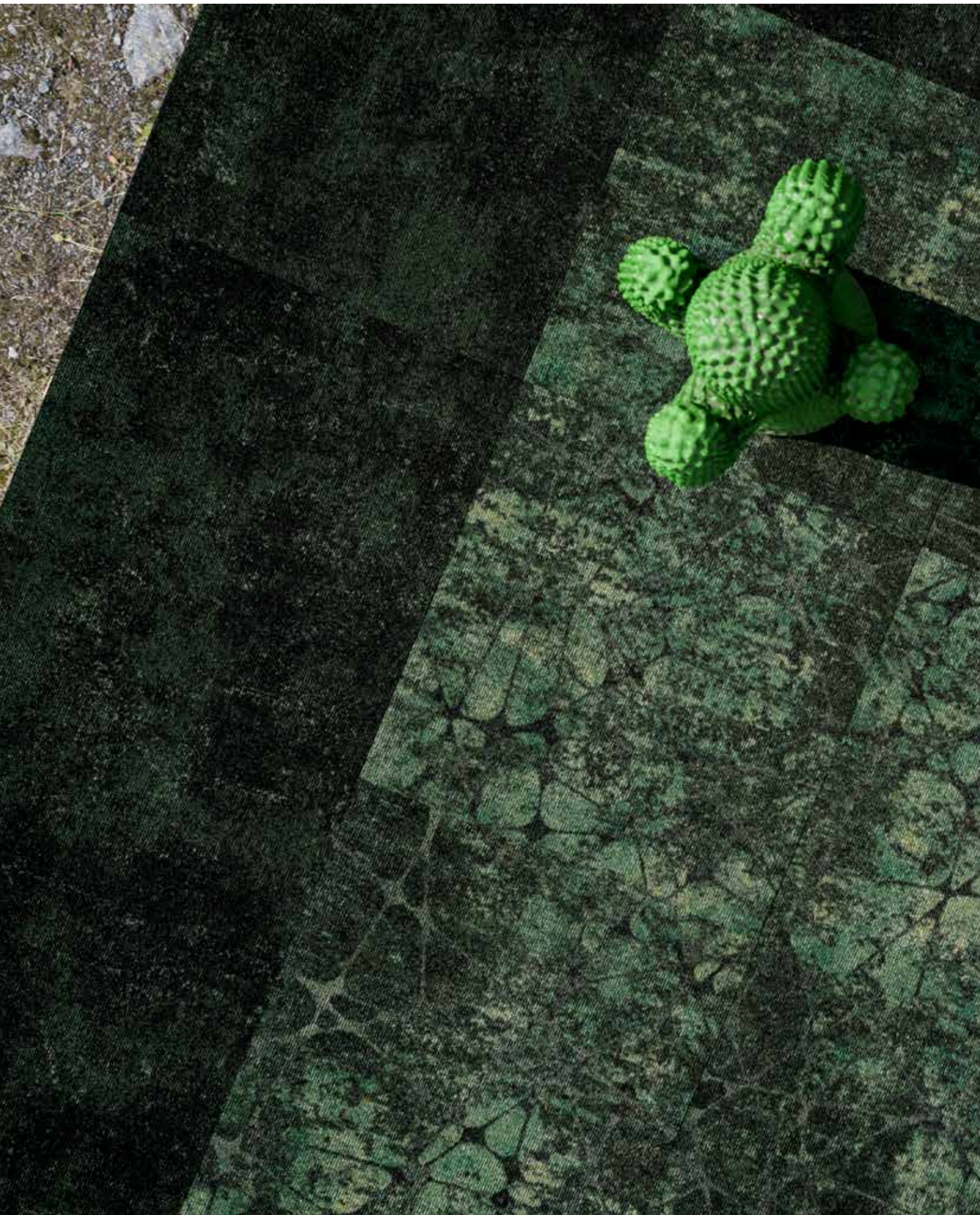
713503048  / 713503096 
713503024  / 7135030 



713531096 
7135310 



713541096 
7135410 

















Broken green

Featuring an elegant vintage touch, broken green combines interior darlings such as bottle green, forest green and emerald into contemporary colour compositions with interesting layers.

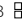





713506048  / 713506096 
713506024  / 7135060 





713513048  / 713513096 
713513024  / 7135130 





713523048  / 713523096 
713523024  / 7135230 



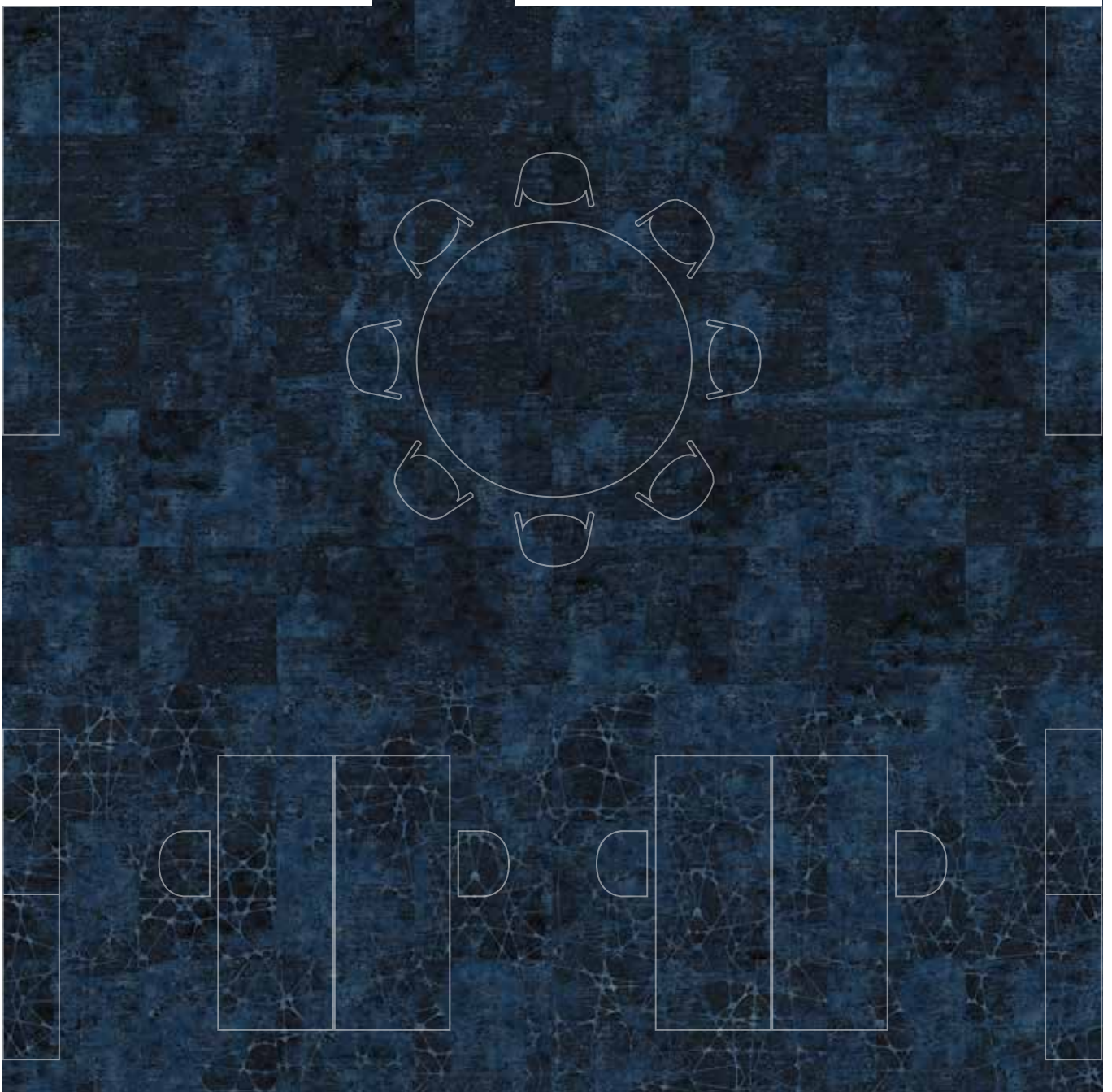
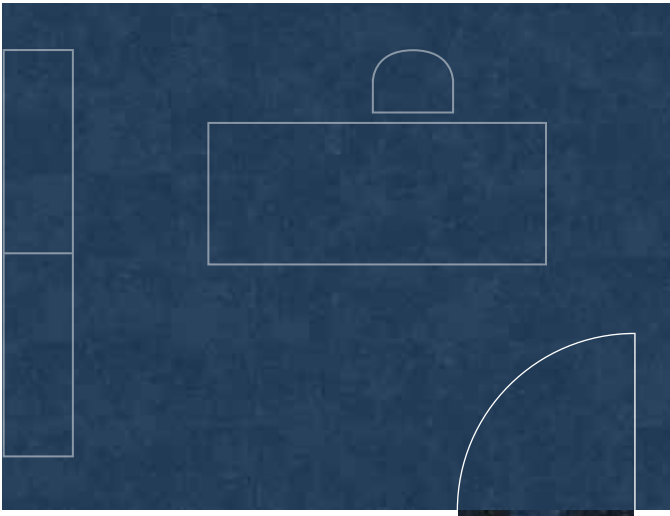
713533096 
7135330 

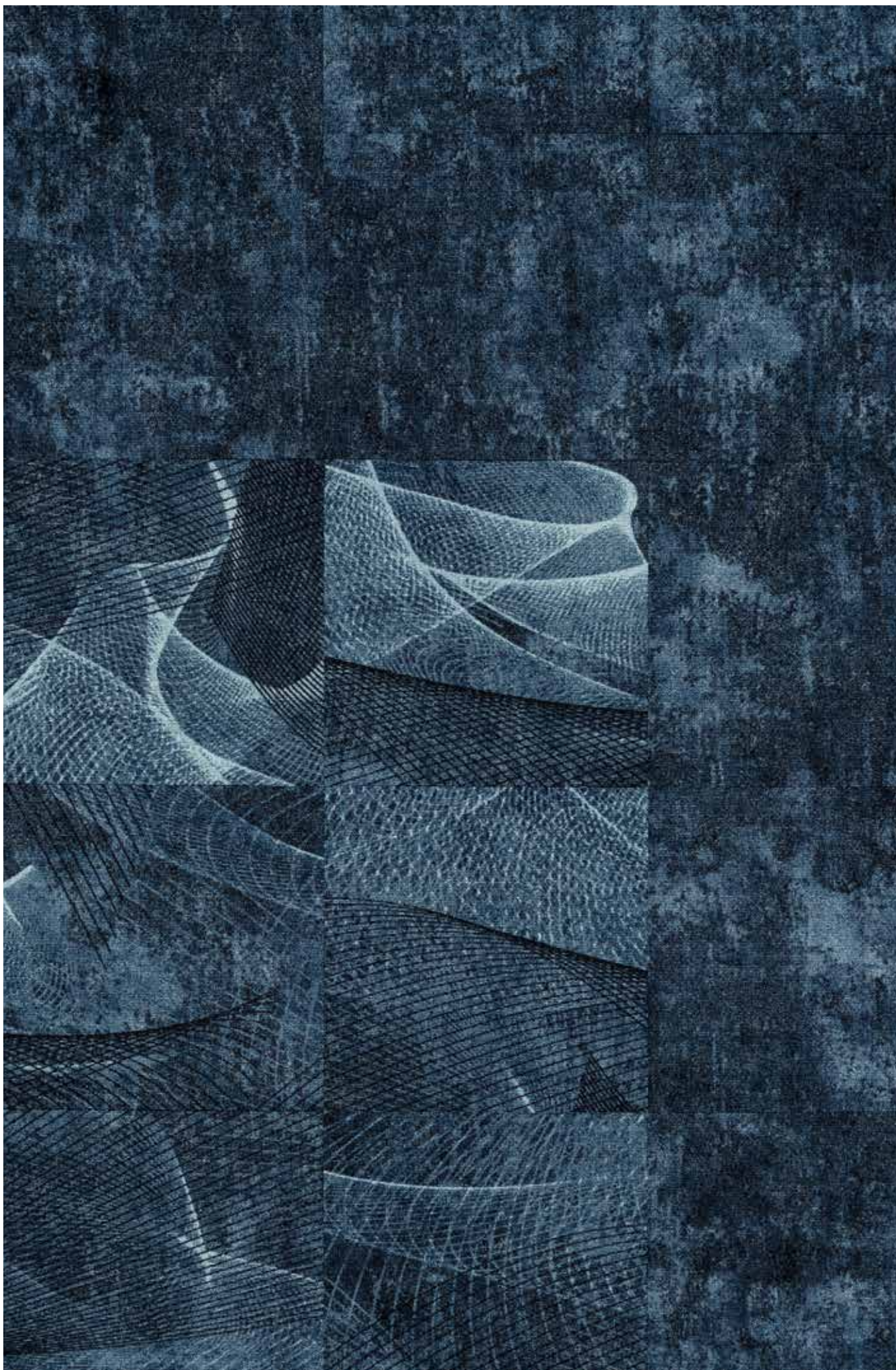


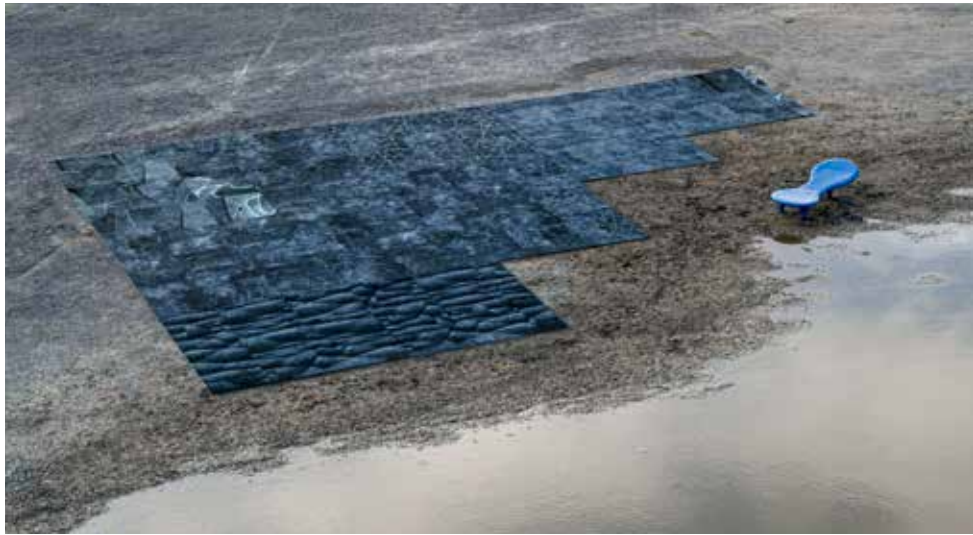
713543096 
7135430 



Floorscape inspiration












Ocean blue

Classic yet vibrant, ocean blue brings calm energy to any interior setting. Adding depth and interesting movement to the five patterns, this is a powerful and refined colour choice.







713505048  / 713505096 
713505024  / 7135050 





713512048  / 713512096 
713512024  / 7135120 





713522048  / 713522096 
713522024  / 7135220 



713532096 
7135320 



713542096 
7135420 













Wild berry

Edible delicacies from nature's kitchen inspired this palette of bright, dark or slightly faded berry colours. A contemporary and bold interior choice to make a powerful statement.







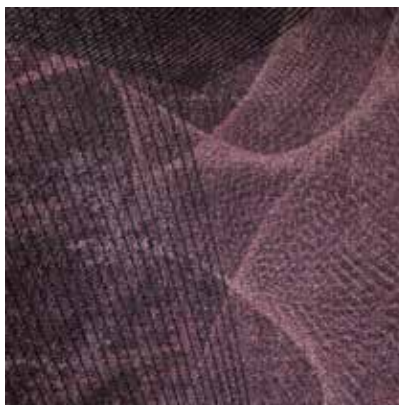
713507048  / 713507096 
713507024  / 7135070 





713514048  / 713514096 
713514024  / 7135140 





713524048  / 713524096 
713524024  / 7135240 



713534096 
7135340 



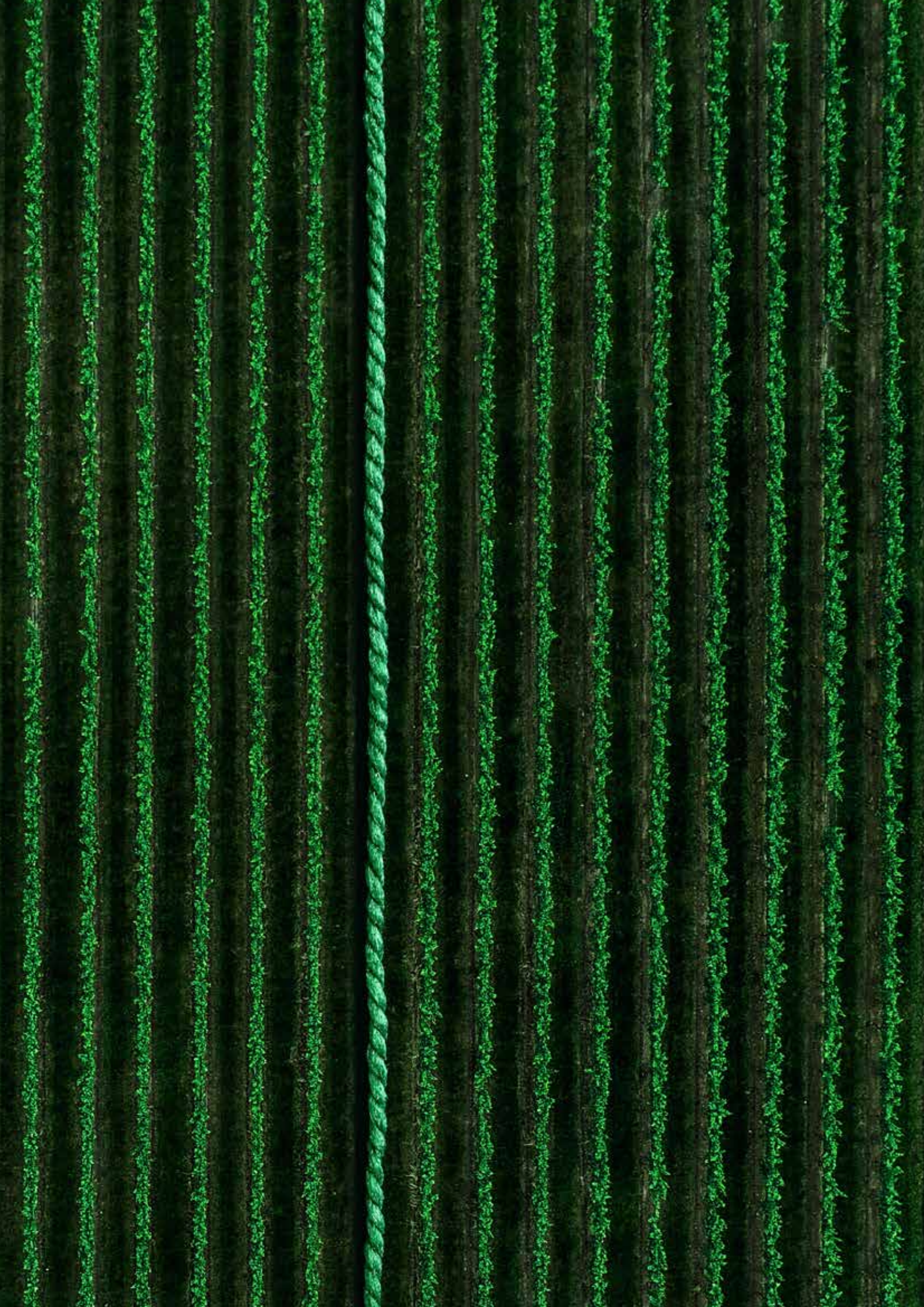
713544096 
7135440 



Carpet for any specification

You can mix and match across the five Discovery designs, but they also combine beautifully with other collections from Ege Carpets. Explore our entire assortment and create distinctive design solutions to fit any practical need, visual framework or budget. Mix your favourite patterns, colours, qualities, struc-

tures, sizes and shapes to develop your very own look and feel. We offer a wide range of minimal flat woven constructions, soft shags and textured multi-level loop structures, as well as tufted cut or loop pile constructions with endless design options, all thanks to our advanced production technology.



From plastic bottles



to flakes



to fibres



to Ecotrust felt backings



From fishing nets



to chips



to yarns



to textile floorings

Waste isn't waste until it's wasted

We turn used plastic bottles into our Ecotrust felt backing. Bottles are transformed into a soft yet strong PET felt material that's long lasting and has great acoustic performance. All our carpet tiles come with this unique, patented backing.

Abandoned fishing nets and other industrial waste are used for the yarn in many of our carpet constructions. Fishing nets account for one tenth of the waste in the ocean. They can drift for months and be a threat to sea life. Once collected, the fishing

nets are cleaned, broken down and reborn as strong, hardwearing yarn that's both regenerated and regenerable.

We challenge industry standards and rethink how aesthetics, quality and sustainability can be combined. Not only in terms of materials but in everything we do, and we invite you to follow The Green Thread with us. Read more about our sustainable ambitions and achievements at egecarpets.com.



Follow The Green Thread

Cradle to Cradle Certified™

This collection is Cradle to Cradle Certified™. The idea behind Cradle to Cradle is that the Earth's finite resources shouldn't go to waste. They should be re-used in new contexts, with no detrimental effect on people or the environment. In other words, the goal is to eliminate waste.

Indoor Air Comfort Gold

This collection is Indoor Air Comfort Gold certified, showing compliance of product emissions with the criteria of many of the voluntary specifications issued by the most relevant ecolabels and similar specifications in the EU. Gold certified products are best-in-class for low emissions and good for indoor air quality.

The Green Thread

A green thread runs through everything we do. It has for decades and will continue into the future. We do our utmost to protect the environment and improve the wellbeing of people. Read more about The Green Thread at egecarpets.com.

Terms and conditions

The Discovery collection features five patterns, each in five colour groups. Available as carpet tiles, planks and wall-to-wall carpet, the collection can take on very different expressions. The multi-level loop structure made from regenerated and regenerable yarn adds depth and texture to the carpet while delivering outstanding quality, great comfort and acoustic benefits.

- 5 unique designs, each in 5 colour groups
- Multi-level loop structure
- Planet, Earth and Network available as 48x48 cm tiles and wall-to-wall carpet at no minimum order. Available as 96x96 cm tiles and 24x96 cm planks from 40 m² per size/design/colour
- Net and Cliffs available as 96x96 cm tiles from 40 m² per size/design/colour and wall-to-wall carpet at no minimum order
- Undisputed performance standard EN 1307
- Performance classification to fit any need; heavy use
- 48-hour sample service and eco-friendly shipping option of 5-7 days (within Europe only)
- Dispatch within 2 weeks from receipt of order for 48x48 cm tiles, 24x96 cm planks and wall-to-wall carpet
- Dispatch within 3 weeks from receipt of order for 96x96 cm tiles







egecarpets.com